

Urban Forestry Management Plans: A Roadmap for Managing Your Trees



Elizabeth Skrzat

Executive Director

City Plants

What is a UFMP?

A roadmap for a shared **VISION** of an urban forest, providing direction for **PROACTIVE MANAGEMENT** to ensure that trees provide maximum, long term benefits to a community.

It can include:

- Budgets
- Inventories
- Schedules
- Policy & procedure manuals
- Standards
- Public Education & monitoring plans
- Existing Ordinances
- Goals





Street Trees

- Maintenance
- Enforcement



Park Trees

- Maintenance
- Enforcement



Planning Department

- Protecting Old Trees
- Planting New Trees



Engineering

- Standards



Politicians

- Budget
- Passing Policy



Non-Profit / Community Organizations

- Advocacy

UFMP: Getting Everyone on the Same Boat

Answer Three Basic Questions

1. Where are we now?

2. Where do we want to be?

3. How do we get there?

Urban Forest Management Plan Toolkit

[Home](#) [1\) Work Plan](#) [2\) Urban Forest Management Planning](#) [3\) Adaptive Management](#) [Resources](#) [🔍](#)



What is the “Toolkit”?

This website provides a “how-to” approach to develop an Urban Forest Management Plan (UFMP). The toolkit will lead you through a planning process.

Would you like to help your community protect and expand its tree resources? If so, this tool will guide you and other community members through the process of developing a strategic plan for the management of urban trees and [green infrastructure](#). Each UFMP is unique and varies by many factors, including desired outcomes of the community.

Management decisions of today will influence the amount and types of benefits derived from the urban forest for future generations. If you want to attain a sustainable urban forest with healthy trees that provide a multitude of benefits, use this website.



Guiding Questions

Urban Forest Management Plan Toolkit

PLANNING STEPS

Pre-planning

WORK PLAN

The work plan information that you gather will be included in the "Introduction" part of the UFMP. See sample Table of Contents of UFMP

Why do you need to develop a plan?

Who are the people whose support you will need?

Where will the geographical limits be?

What areas/trees will be addressed?

When will the plan be developed, and how long will the plan cover?

How is the plan going to be developed? (e.g. personnel - funding)

Plan Development

URBAN FOREST MANAGEMENT PLAN

Vision

What do you want?

Inventory and Assess

What do you have?

Collect data to understand the current state of the urban forest and its management.

Strategic Plan

How do you get what you want?

Analyze data and identify issues and trends over time.
Prioritize needs and opportunities.

Goals, objectives, actions based on your vision and analysis.

Implementation (Action) Plan

Who will take action and when?

Monitoring Plan

How will you know when you're achieving your goals?

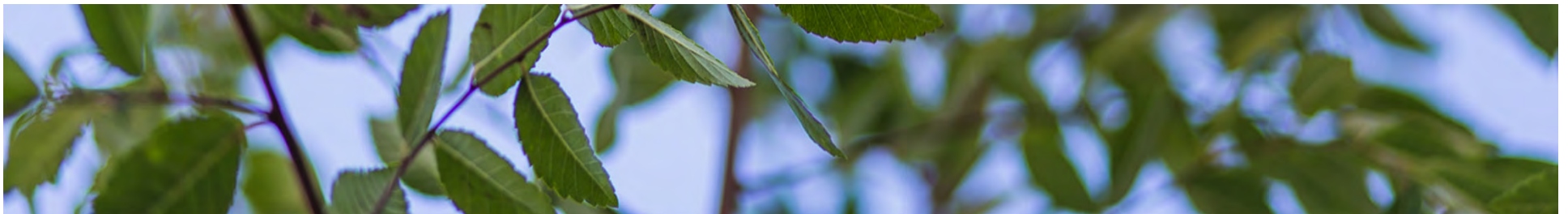
Compile the documents for public review, revise as needed, and obtain approval.
See sample Table of Contents of UFMP.

Post-planning

ADAPTIVE MANAGEMENT

Monitor, evaluate progress, and revise as needed. *Are you getting what you want?*

UFMP Toolkit: Pre-Planning



UFMP Toolkit: Define Your Scope

Example Scope Table

Check those of interest	What will be assessed?	Managed by (specify, e.g., city, residential, commercial, etc.)	Geographic limits (specify, if applicable)	Other (specify)
	Overall canopy cover	(All)		
	Street trees			
	Facility trees			
	Parking lot trees/Shading			
	Park trees			
	Heritage trees			
	Open space trees			
	Other: specify			

Ready to Get Started?

- **Step 1:** Establish Partnerships & Write Scope of Work
- **Step 2:** Hire a Consultant
- **Step 3:** Form & Grow a Formal Working Group
- **Step 4:** Write the Plan
- **Step 5:** Adopt the Plan

Step 1: Establish Partnerships & Write Scope of Work



Step 2: Hire a Consultant!

Create a Review Committee to Review RFPs

Who Should You Include?

- Organizing Agency
- Reps for Mayor/Council
- People Who Touch Trees:
 - Park Trees
 - Street Trees
 - Planning
- Non-Profit/Community Orgs
- Community Rep –
Look to your “Tree Board”
- Funding Agency

Step 2: Hire a Consultant!

DUDEK

[Services](#)

[Projects](#)

[About Us](#)

[Join Our Team](#)

[Co](#)

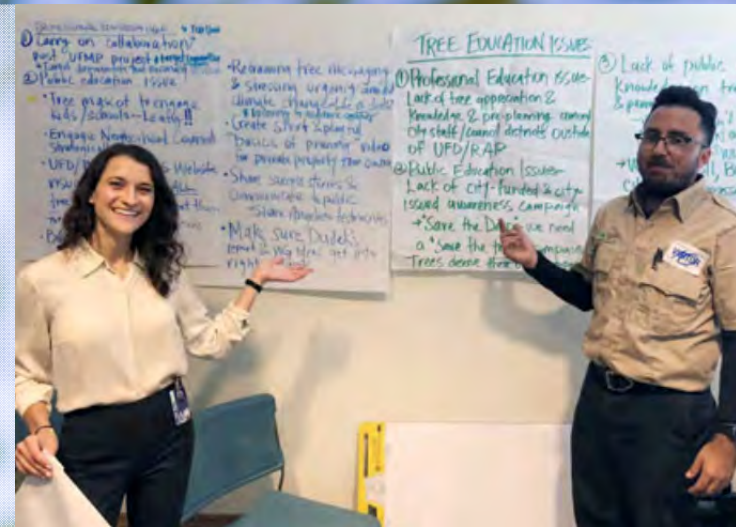
Your **project**.
Your **success**.
Our **business**.



Step 3: Form a Working Group

Consultant collaborates with a larger working group on the Scope of Work, creating buy-in from a large cross-section of organizations:

- Mayor's Office
- Council Offices
- Recreation & Parks (Park Trees)
- Bureau of Street Services (Street Trees)
- Planning Department
- Utility
- Non-Profit / Community Organizations
- Community Forestry Advisory Committee (Tree Board)
- U.S. Forest Service & CAL FIRE (Funders)



WORKING GROUP MEETING

LA's Working Group



Step 4: Write the Plan



FIRST STEP

Developing an Urban Forest Management Plan
for the City of Los Angeles



Key Findings: Comparative City Study

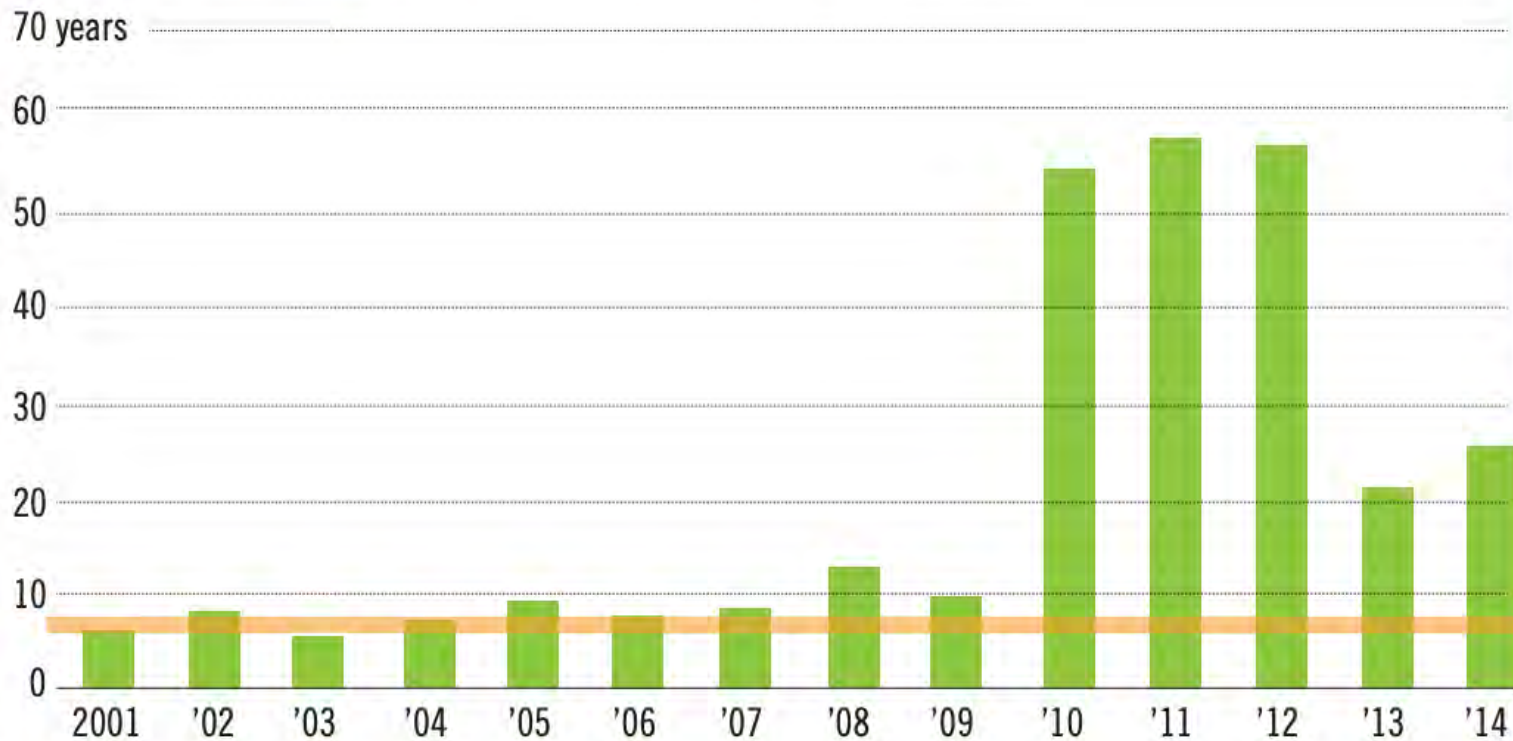
**Table 2
Comparison City Results**

City	New York City	San Francisco	Melbourne	Los Angeles
Population	8,622,698	884,363	135,959	4,030,000
Street Tree Total	666,134	125,000	50,000	700,000
Park Tree Total	140,000	131,000	25,000	150,000–300,000
Urban Forest Budget	\$57 million	\$19 million	\$4.6 million	\$25,395,000 – Total \$21,595,000 – UFD \$3,800,000 – RAP
Per-Capita Spending	\$6.61	\$21.48	\$33.83	\$6.30
Per Tree Spending	\$70.71 (all public trees)	\$74.21 (all public trees)	\$61.33 (all public trees)	\$25.40 – \$29.87 (all public trees) \$30.85 (street Trees) \$13–\$25 (park trees)
UFMP	No	Yes for street trees	Urban Forest Strategy Plan	No
Tree Stocking Rate Goal	Estimated new street tree potential as of the 2015 Street Tree Census: 240,000	2,500 per year to 2034 to reach goal of 155,000 street trees	3,000 per year to increase canopy from 22% to 40% by 2040	None
Tree Establishment Care	2 years	3 years	2 years	None

Key Findings: Current Management Practices

STREET TREE TRIM CYCLES

Trim cycle Best Management Practices (5-7 years)



Source: 2015 BSS State of the Street Trees Report

Key Findings: Budget Gap

Table 4 Existing vs. Needed Recreation and Parks Urban Forestry Funding		
Tree Planting	Crews	Trees Planted Per Year
RAP FY 2018/2019	1	630
Planting Towards Filling All Vacant Sites	6	1,000
Gap to sustainability	5	370
Tree Establishment Care	Crews	Trees with Establishment Care
RAP FY 2018/2019	1	630
2- to 3-year establishment care	6	3,000
Gap to sustainability	5	2,370
Tree Trimming and Related Maintenance	Crews	Trees Trimmed Per Year
RAP FY 2018/2019	1	814
5- to 7-Year Trimming Cycle	6	5,000
Gap to sustainability	5	4,186
Dead Tree and Stump Removal	Crews	Dead Trees/Stumps Removed Per Year
RAP – FY 2018/2019	1	549
No dead trees left standing at end of year	6	2,500
Gap to sustainability	5	1,951
RAP Managed Golf Courses	Crews	Golf Courses Managed
RAP – FY 2018/2019	0	0
Manage All RAP Golf Course Trees	3	15
Gap to sustainability	3	15
RAP Funding	Programs	Total Budget Per Year
FY 2018/2019	\$1,900,000	\$3,800,000
Sustainable level	\$8,400,000	\$16,800,000
Gap to sustainability	\$6,500,000	\$13,000,000

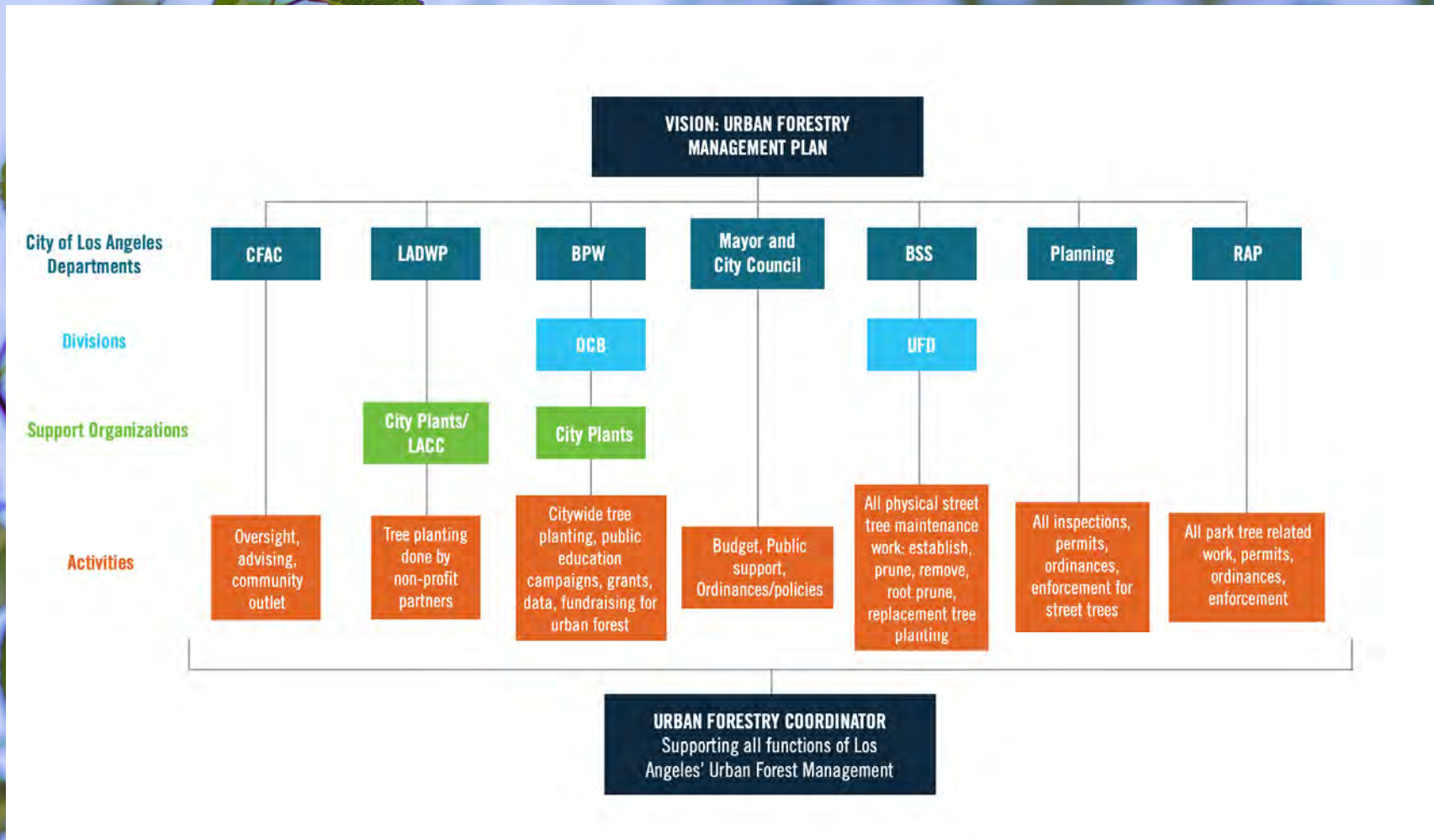
RAP = Los Angeles Department of Recreation and Parks; FY = fiscal year

Key Findings: Budget Gap

Table 3		
Existing vs. Needed Urban Forestry Division Urban Forestry Funding		
Tree Planting	Funding	Trees Planted Per Year
UFD – FY 2018/2019	\$790,790	800
Replace all removed trees	\$3,459,706	3,500
Gap to sustainability	\$2,668,916	2,700
Tree Establishment Care	Budget	Trees with Establishment Care
UFD – FY 2018/2019	\$399,689	800–1,500
2- to 3-year establishment care	\$3,255,500	7,000–10,000
Gap to sustainability	\$2,855,811	6,200–8,500
Tree Trimming and Related Maintenance	Budget	Trees Trimmed Per Year
UFD – FY 2018/2019	\$4,180,138	27,000
To reach 5- to 7-year trimming cycle	\$18,578,391	120,000
Gap to sustainability	\$14,398,253	93,000
Dead Tree and Stump Removal	Budget	Dead Trees/Stumps Removed Per Year
UFD – FY 2018/2019	\$988,072	1,600
No dead trees left standing at end of year	\$2,161,500.00	3,500
Gap to sustainability	\$1,173,428.00	1,900
UFD Funding	Programs	Total Budget Per Year
FY 2018/2019	\$6,358,689	\$21,595,000
Sustainable level	\$27,455,097	\$65,000,000
Gap to sustainability	\$21,096,408	\$43,405,000

UFD = Urban Forestry Division; FY = fiscal year

Key Findings: Proposed Governance Structure

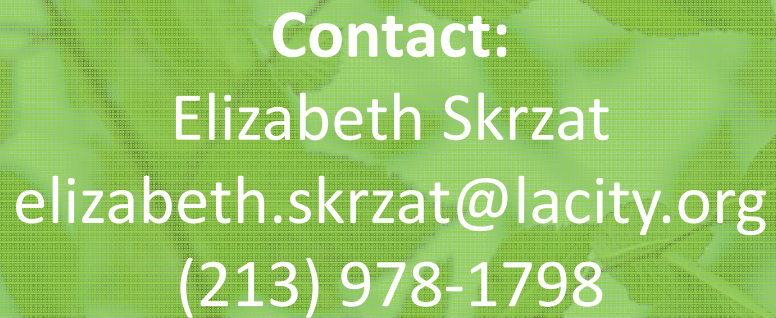


Step 5: Adopt the Plan





Thank you!



Contact:
Elizabeth Skrzat
elizabeth.skrzat@lacity.org
(213) 978-1798

